

# 2022 ANNUAL CONFERENCE

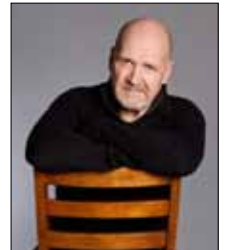
## EVOLVING IN A CHANGING WORLD

**Relating Remotely vs. Remotely Relating: The art of working remotely in healthy and productive ways**

### BILL CARR

Communication Expert and Award-Winning Humourist

For over twenty-five years, Bill Carr has been making people laugh at what's trivial while helping them think deeply about what counts. His unique blend of humour and insight inspires laughter and helps people see their world with a fresh perspective.



### Farming the fields of social media

#### TIM MAY

Farmer Tim is a proud fourth generation dairy farmer and multi-award winning "agvocate" from Rockwood, Ontario. He graduated from the Ontario Agricultural College at the University of Guelph in 1994 with a degree in Animal Science and has been managing his family's herd of Holsteins ever since. Tim is extremely passionate about spreading positive messages about farming through social media. He uses humour and his genuine compassion for people and animals to both entertain and educate his over 150,000 followers around the world.

### PANEL DISCUSSION: Evolving for success

**Panel presenters: Mike Buis, *Buis Beef and Bloomfield Feed Company*; Marianne den Haan, *Sheldon Creek Dairy*; Erin McLean, *McLean Berry Farm*; and Kevin Snyder, *Snyder Heritage Farms*.**

Our panel discussion features Farm & Food Care members whose businesses depend on consumer engagement. Each of our panel presenters will talk about why and how their companies were affected, what strategies they implemented to deal with immediate and longer term needs and what innovative and creative ideas they've put in place to set themselves up for success.

### REGISTRATION

Register on-line at [www.FarmFoodCareON.org](http://www.FarmFoodCareON.org)

Early bird rate - deadline	March 30th	Regular rate
In person member rate:	\$75	\$95
In person non-member rate:	\$95	\$125
Virtual member rate:	\$40	\$60
Virtual non-member rate:	\$60	\$90

General Sponsors:



# 10 YEAR ANNIVERSARY



2022 ANNUAL CONFERENCE  
- hybrid -

## April 13, 2022

In person at

*The GrandWay Event Centre*  
(Grand River Agriculture Society)  
7445 Wellington County Rd 21,  
Elora, ON

or virtually

Networking 9 a.m.  
Conference  
10 am to 4:00 p.m.

### HIGHLIGHTS:

Taste of Ontario lunch  
Overview of Farm & Food  
Care Ontario initiatives

Presentation of the  
Farm & Food Care Ontario  
Champion Award

Registration fees are non-refundable,  
but are transferable.

Farm & Food Care Ontario  
reserves the right to limit entry to this  
event to those individuals who support  
the objectives of the organization.