



Ontario
Federation of
Agriculture

OFA PAC MEETING UPDATES

GREENBELT EXPANSION

&

HIGH SPEED RAIL

JANUARY 30, 2018

GREENBELT EXPANSION

- EBR Posting 013-1661: closes March 7, 2018
- draft OFA response to Board February 20th
- to define a study area, which **will** inform **future Greenbelt Expansion**
- Advisory Panel (Crombie) recommended “grow the Greenbelt beyond its current boundary using a systems approach, based on areas of ecological and **hydrological significance where urbanization should not occur**” (Recommendation 71)
- also in 2017 Greenbelt Plan (5.6.1)

GREENBELT EXPANSION

- study areas are conceptual
- study areas connect to the existing Greenbelt
- focus on water features; wetlands, coldwater streams and moraines
- 7 areas in western portion of Growth Plan's outer ring
- Simcoe, Dufferin, Wellington, Waterloo & Brant

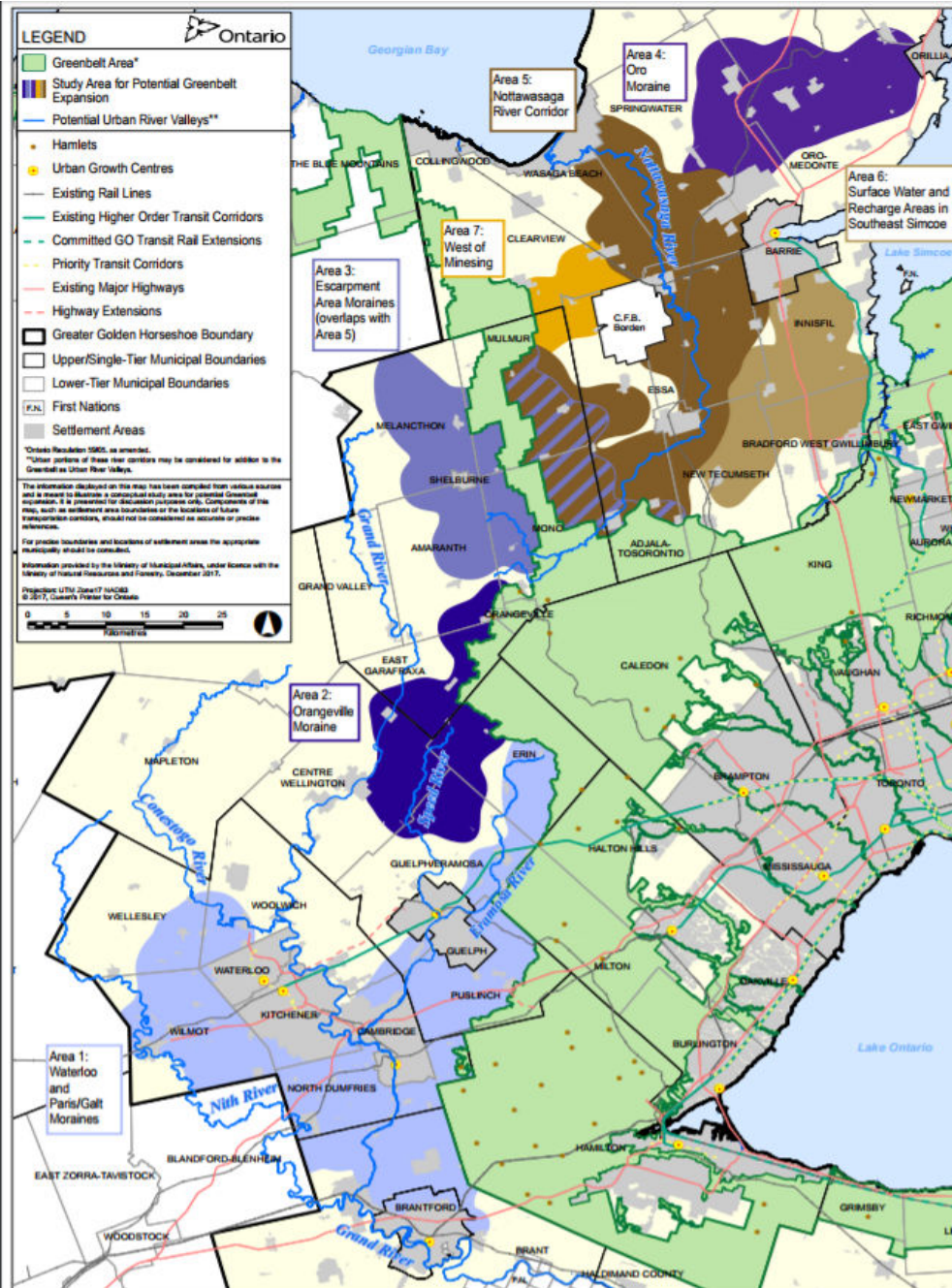


Figure 4: Study Area for Potential Greenbelt Expansion

GREENBELT EXPANSION PUBLIC OPEN HOUSES

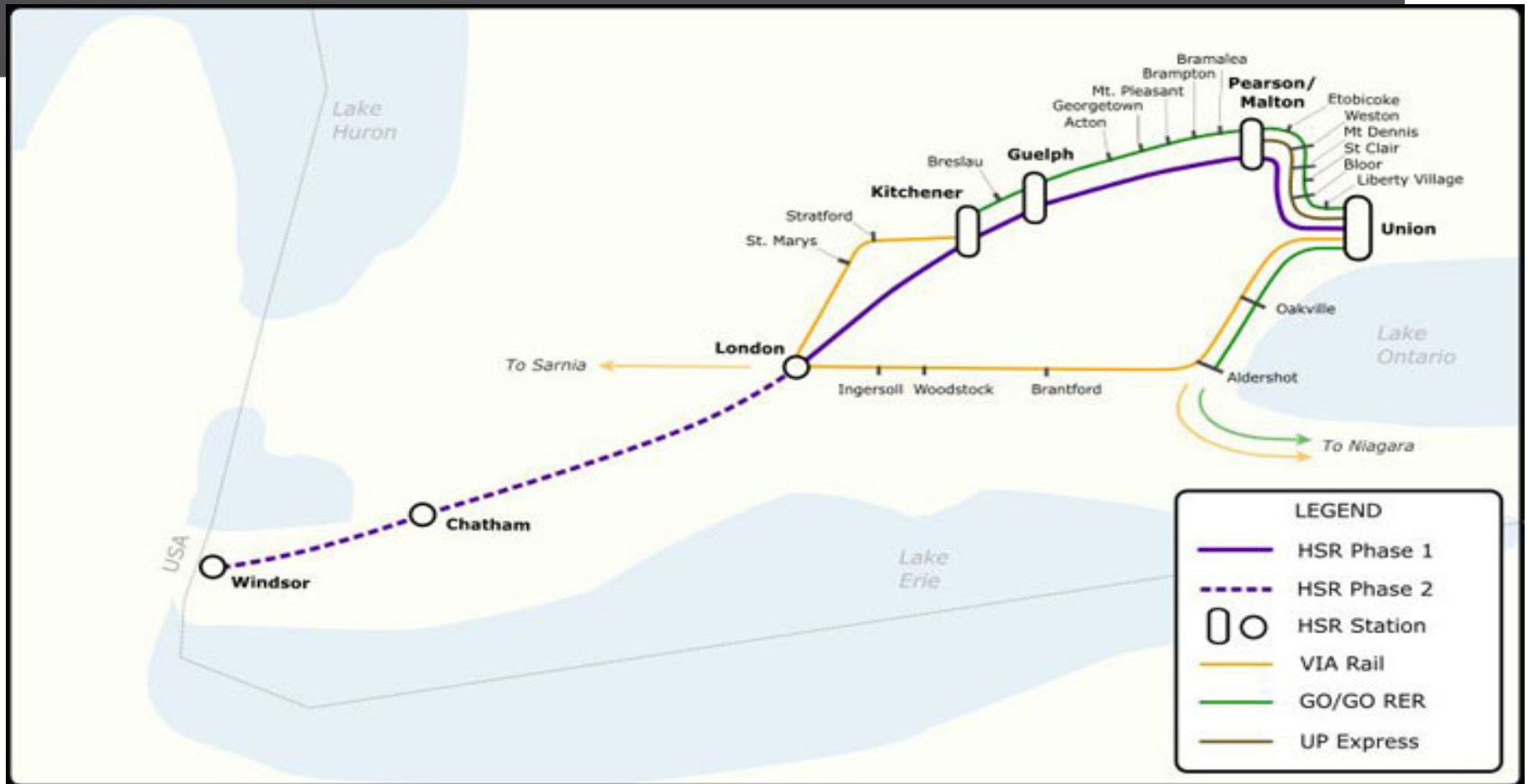
- 1. Barrie:** Southshore Community Centre: **January 31**
- 2. Guelph:** Italian Canadian Club: **February 6**
- 3. Orangeville:** Tony Rose Memorial Sports Centre:
February 8
- 4. Alliston:** Alliston Memorial Area: **February 15**
- 5. Brantford:** Branlyn Community Centre: **February 20**
- 6. Kitchener:** Tannery Event Centre: **February 22**
 - 5:30 – 8:00 PM; except Brantford (6:00 – 8:30)

GREENBELT EXPANSION

from 11 in questions in the discussion paper, Municipal Affairs posed;

- Beyond the features identified (wetlands, coldwater streams and moraines), are there other “building blocks that should be considered?
- Of the 7 areas identified, are there some that are more or less important? Why?
- With the range of settlement areas in the GGH – from hamlets to major cities – how should the province balance accommodating growth with protecting water resources?

HIGH SPEED RAIL



HIGH SPEED RAIL

- proposing construction in 2 phases:
- Phase I: Toronto – London: begin construction 2022; in service 2025
- Phase II: London - Windsor: in service 2031
- But before;
- develop Terms of Reference (ToR) – 2 year exercise
- Environmental Assessment (EA) – 2 year exercise
- public consultations, EBR postings for BOTH

HIGH SPEED RAIL

- 2 EA Processes
- 1 addressing upgrades to existing Toronto – Kitchener GO line (Peel/Halton/Wellington/Waterloo)
- 2nd addressing Kitchener to London on a new, dedicated right-of-way (Waterloo/Oxford)

HIGH SPEED RAIL

- the ToR are key; will determine what will be studied; what they'll consider comments on
- subjects not in ToR will be ignored!
- need to ensure ToR considers the full range of transportation options, not just HSR
- for commenters; need to provide alternatives; just saying "no" will not cut it (NIMBY)